

# *Thank You*

*2018 Annual Report*



NARRAGANSETT BAY

**SAVE THE BAY®**

50



*Our mission is simple.*

## **Protect and improve Narragansett Bay.**

---



*Everything we accomplish is made possible by the support of our members, donors, volunteers and community partners.*

*Our 2018 annual report highlights much that we were able to accomplish with your help during the past year.*

***Thank you for your support.***

# A message from our Board President and Executive Director

---

Dear Friends,

If there is any doubt about how Rhode Islanders feel about clean water and the environment, one need look no further than last November’s \$47.3 million environmental bond vote. It passed by an impressive 78.9%, a new record for environmental bonds in the Ocean State. Save The Bay led the communication effort to educate the public about the merits of the bond, and was instrumental in ensuring that it included urgently needed investments in clean water, flood protection for wastewater treatment plants, public access and coastal resilience.

The environmental bond was one of several high notes in an eventful year for Save The Bay. With your help, we completed the removal of the Shady Lea Dam on the Mattatuxet River, opening up spawning habitat for migratory fish and improving water quality. The General Assembly and Governor, responding to a lawsuit brought by Save The Bay, passed important legislation to reform the Coastal Resources Management Council, ensuring that coastal communities are adequately represented on the Council. We rallied hundreds of concerned citizens to oppose the federal government’s plans to open New England’s offshore waters to oil and gas exploration. Our staff and volunteers played a leadership role in completing a major salt marsh adaptation project in Ninigret Pond. And we, alongside our partners, persuaded federal fisheries managers to implement measures protecting river herring from becoming inadvertent bycatch in commercial herring trawls.

Underpinning this progress is Save The Bay’s commitment to environmental stewardship. Inspiring rising generations to care for the Bay is the principal goal of our Explore The Bay education program, which continues to set the standard for excellence in experiential marine science education.

None of these gains would have been possible without your support. Whether you volunteered, participated in our events and programs, responded to a “call to action,” or made a financial contribution, you had an impact. Our fundamental strength as an advocacy and education organization is derived from you, our members, donors and volunteers. Thank you for all you do on behalf of the Bay.

With appreciation,



A handwritten signature in black ink, appearing to read 'Jon Stone'.

Jonathan Stone  
Executive Director



A handwritten signature in black ink, appearing to read 'Cheryl'.

Cheryl Nathanson  
Board President



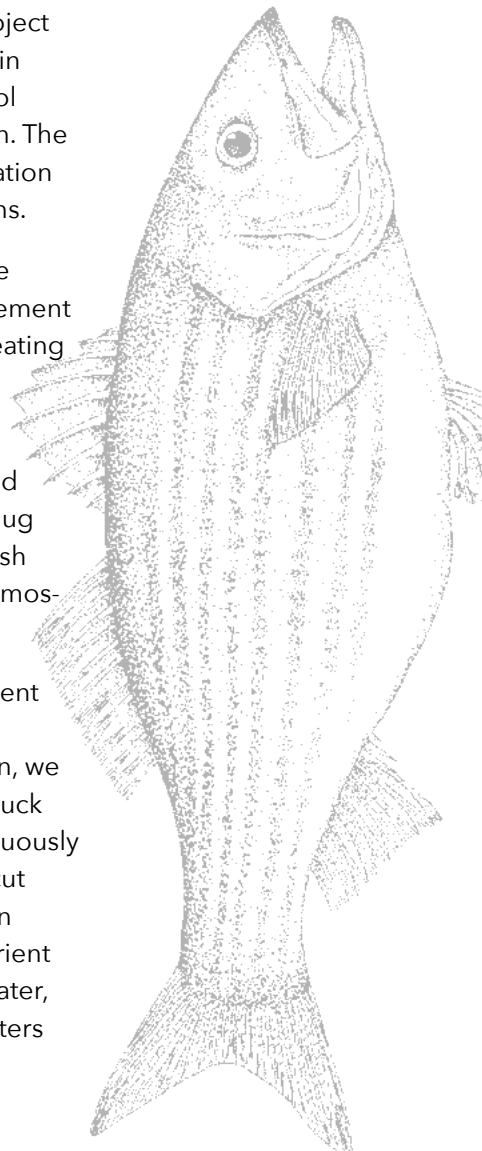
# *With your help...*

## Habitats are restored.

---

In 2018...

- We removed the Shady Lea Dam on the Mattatuxet River, restoring a free-flowing river and improving stream habitat and spawning access along one of Rhode Island's largest herring runs.
- We launched a first-of-its-kind marsh adaptation project along the Taunton River in Dighton, Massachusetts, in partnership with the Bristol County Mosquito Control Program and the Dighton Conservation Commission. The project is serving as a model for other marsh restoration projects in the Buzzards Bay and North Shore regions.
- At Sapowet Marsh in Tiverton, we partnered with the Rhode Island Department of Environmental Management to convert a low-lying field into native grassland, creating suitable habitat for the adjacent salt marsh to move inland as sea level rises.
- At Potters Pond, Winnapaug Pond, Ninigret Pond and Sapowet Marsh, all degraded by sea level rise, we dug shallow creeks to drain trapped water, allowing marsh grasses to recolonize the dead zones and reducing mosquito breeding habitat.
- In a bi-state partnership with Rhode Island Department of Environmental Management and Connecticut Department of Energy and Environmental Protection, we installed several fixed-location probes in the Pawcatuck River estuary and Little Narragansett Bay that continuously test water conditions. We are helping the Connecticut Department of Energy and Environmental Protection develop a science-based approach to reducing nutrient pollution in these waters in order to restore clean water, fish populations and public recreation to coastal waters shared by Rhode Island and Connecticut.







*The scenic Mattatuxet River  
was restored after the removal  
of the Shady Lea Dam*

**575**  
**feet**

of river habitat  
restored

**2,898**

water quality tests  
completed by our  
Waterkeepers

**25,970**  
**pounds**

of trash removed from  
our shorelines

NARRAGANSETT BAY

**SAVE THE BAY®**

50



# With your help...

*A Woonsocket High School student participating in Save The Bay's B-WET program learns to identify and remove invasive species*

**2,310**

individuals participated in Save The Bay's BayCamps and public programs

**12,955**

K-12 students were introduced to Narragansett Bay via Save The Bay education programs

**30,246**

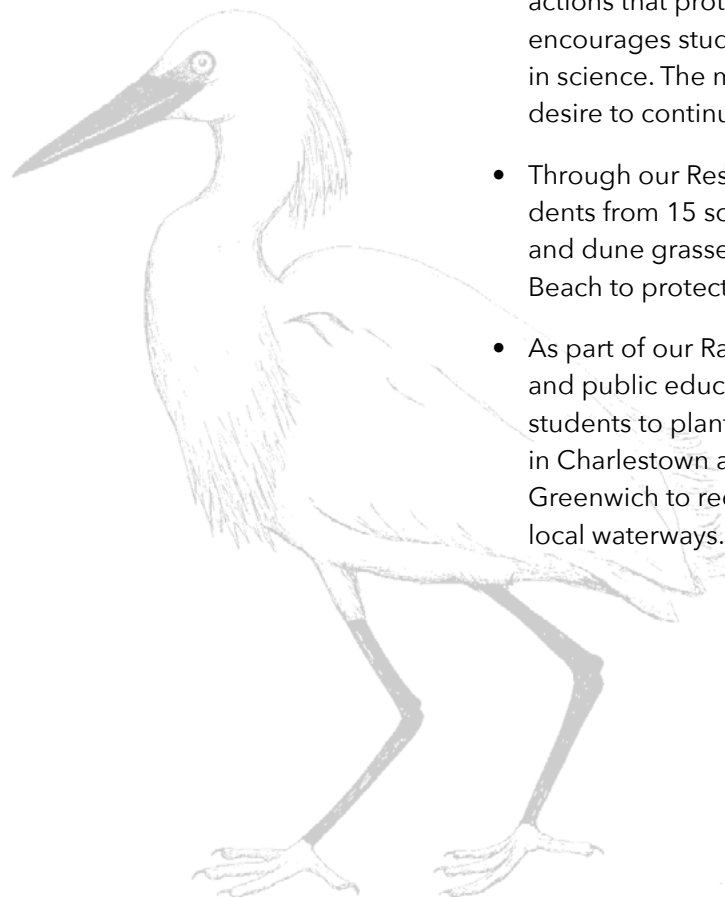
guests connected with local marine life at the Exploration Center and Aquarium

# Future Bay stewards are engaged.

---

In 2018...

- A third-party evaluation found our Narragansett Bay Field Studies program to be an asset to students in three urban schools in Rhode Island. Evaluators said, "It promotes relationships with nature, develops contextual understanding of watersheds and ocean science, and actively involves students in learning and civic engagement opportunities in which they may not otherwise participate. The program empowers students to take personal actions that protect their local environment and encourages students to pursue studies and careers in science. The most significant change was the desire to continue studying science in the future."
- Through our Restoration Education program, students from 15 schools helped us plant salt marsh and dune grasses at Ninigret Marsh and Easton's Beach to protect crucial habitats of the Bay.
- As part of our Rain Garden in Classes program and public education efforts, we worked with K-12 students to plant rain gardens in Ninigret Park in Charlestown and Meadowbrook Farm in East Greenwich to reduce polluted runoff from entering local waterways.



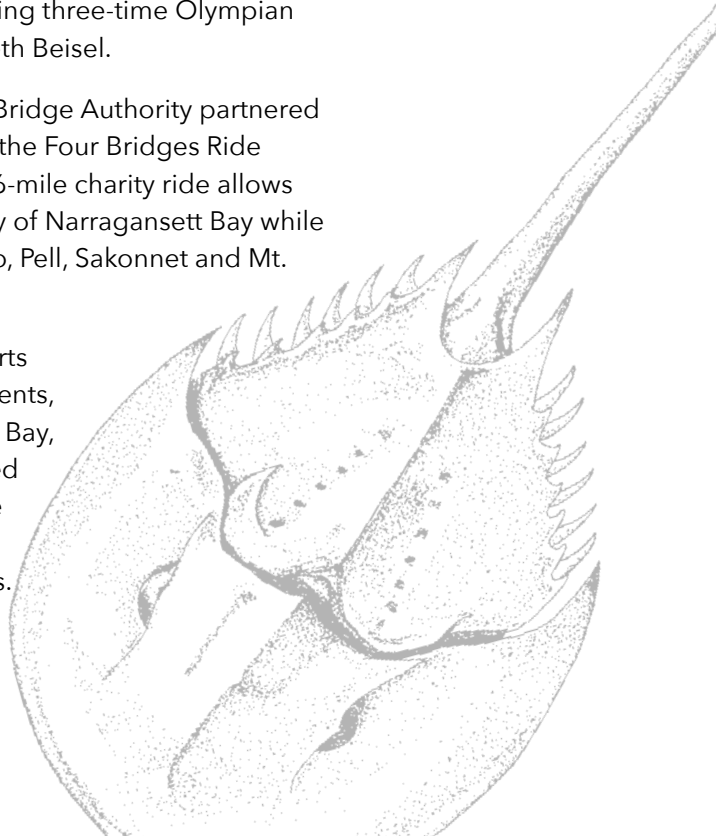
# *With your help...*

## **Our community continues to grow.**

---

In 2018...

- Volunteers collected 25,970 pounds of trash during 163 beach cleanups along the Rhode Island shoreline.
- 77 “citizen-scientist” volunteers assisted Save The Bay with studies and projects throughout the year, including seal monitoring, water quality testing and salt marsh planting.
- 4,394 volunteers contributed 28,686 hours of time to beach cleanups, the Exploration Center and Aquarium, administrative tasks and more.
- Save The Bay’s 42nd Annual Swim welcomed 170 first-time swimmers from 16 states, including three-time Olympian and Rhode Island native, Elizabeth Beisel.
- The Rhode Island Turnpike and Bridge Authority partnered with Save The Bay in organizing the Four Bridges Ride for the third year in a row. The 26-mile charity ride allows bicyclists to celebrate the beauty of Narragansett Bay while they pedal across the Verrazzano, Pell, Sakonnet and Mt. Hope Bridges.
- Ticket sales and fundraising efforts associated with Save The Bay events, including the Swim, Taste of The Bay, and Artists for The Bay, generated nearly \$335,000 to support Save The Bay’s continued advocacy, restoration and education efforts.







*CVS volunteers pitch in during International Coastal Cleanup Day*

**\$692,490**  
The in-kind value of contributed volunteer time

**170**  
swimmers from 16 states participated in the Save The Bay Swim for the first time

**417**  
swimmers and kayakers participated in the 42nd Save The Bay Swim





*With your help...*

Save The Bay supporters  
gather at the Rhode Island  
State House to oppose  
off-shore drilling



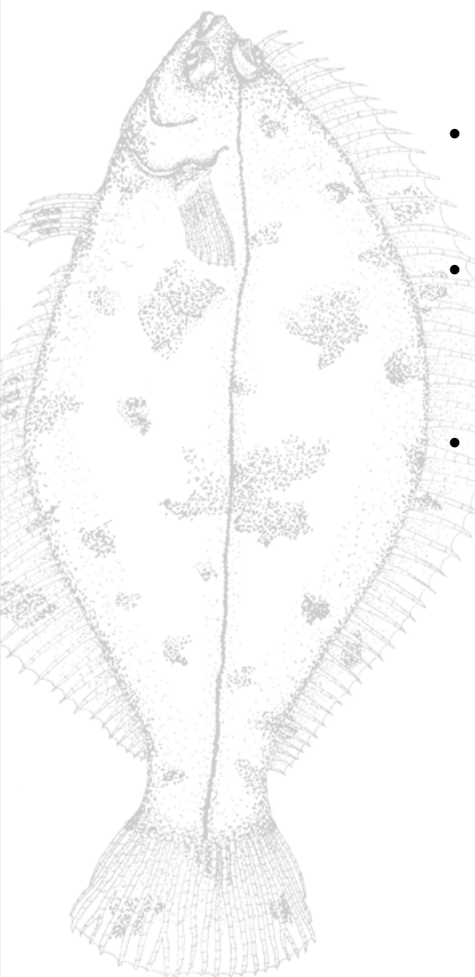


# Our voices are heard.

---

In 2018...

- After the federal government revealed a proposal to open U.S. continental shelf waters to offshore oil exploration and drilling, we mobilized hundreds in a march to protect coastal waters, and thousands who signed our [change.org](https://www.change.org) petition.
- We filed a Rhode Island Superior Court complaint against the Governor's appointments to Rhode Island's Coastal Resources Management Council to ensure compliance with the separation of powers amendment of 2008 and to ensure that coastal communities are represented by the Council.
- We championed the 2018 Green Economy and Clean Water Bond to a 78.9% voter approval rating for investments in clean water and open space.
- In an effort to tackle litter at its source, we launched the Litter Free Pledge Campaign, partnering with WPRI and the Conimicut Village Association on weekly clean-ups at Conimicut Point and post-cleanup litter surveys.
- In a collective effort to reduce fishing pressure on depleted Atlantic herring populations, Save The Bay joined with the Rhode Island Saltwater Angler's Association and Audubon Society of Rhode Island to urge the New England Fisheries Management Council to impose new catch limits and establish an inshore buffer zone to protect the species from localized depletion by large commercial trawlers. The council adopted several measures in an important first step toward protecting this species.



# Financial Report

## From our Treasurer

Dear Friends of Save The Bay,

Fiscal year 2018 saw continued progress towards the financial sustainability we strive for to secure a continued role in the protection of Rhode Island’s most valuable resource, Narragansett Bay.

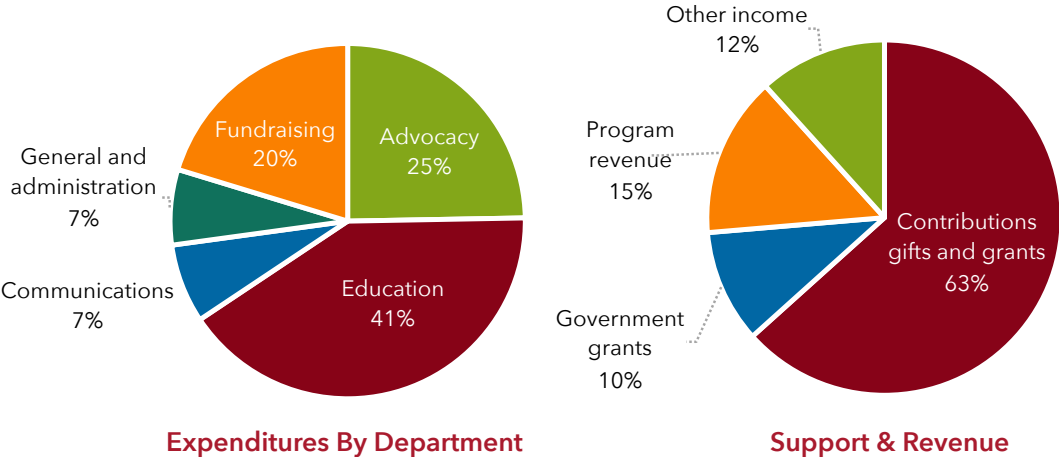
Despite the weather-driven cancellation of our biggest fundraiser, the Swim, our fiscal year ended June 30, 2018 with a total asset increase of \$1.6 million, primarily from cash, pledges and investments, thanks to the generosity of our donors, a strong stock market and the tireless work of management and the fundraising team during the “quiet” phase of our comprehensive 50th Anniversary Campaign.

Total revenue of \$3.1 million included contributions that again exceeded \$1.1 million, and grants of \$639,000 that funded signature activities including our salt marsh restoration program. Our education programs that engage so many schoolchildren throughout Rhode Island, Connecticut and Massachusetts generated over \$538,000 in revenue.

Total expenses of \$3.2 million were up \$173,000 over 2017 due to a lower staff vacancy rate and an increase in grant and program costs. The latter is a positive detail, reflecting an increase in both activity and revenue in these areas. Of note, General and Administrative and Fundraising expenses were down by \$40,000 year over year.

It is only through your generosity that we are able to invest in our efforts to protect the Bay. We greatly appreciate all that you do and look forward to continuing, with your support, the work of preserving and improving this precious resource.

  
Steve Geremia, Treasurer





## FY18 Statement of Financial Position

### Assets

Cash and cash equivalents	\$536,836
Receivables (pledges and grants)	1,084,417
Prepaid expenses and other	102,759
Property and equipment, net	6,404,979
Cash held for long-term purposes	1,149,726
Investments	1,737,522

<b>Total assets</b>	<b>11,016,239</b>
---------------------	-------------------

### Liabilities

Accounts payable and accrued expenses	240,286
Deferred revenue	233,191
Long term debt	1,253,503

<b>Total liabilities</b>	<b>1,726,980</b>
--------------------------	------------------

### Net Assets

Unrestricted	5,653,417
Temporarily restricted (Operations)	940,430
Temporarily restricted (Campaign)	1,712,953
Permanently restricted	982,459

<b>Total Net Assets</b>	<b>9,289,259</b>
-------------------------	------------------

<b>Total Liabilities and Net Assets</b>	<b>11,016,239</b>
---	-------------------

## FY18 Statement of Activities

### Support and Revenue

Contributions, gifts and grants	\$2,329,693
Government contracts	379,231
Program revenue	538,732
Other income	430,312

<b>Total Support and Revenue</b>	<b>3,677,968</b>
----------------------------------	------------------

### Expenses

Advocacy	905,497
Education	1,499,899
Communications	263,657
General and administration	251,704
Fundraising	743,676

<b>Total Expenses</b>	<b>3,664,433</b>
-----------------------	------------------

<b>Increase in net assets</b>	<b>13,535</b>
-------------------------------	---------------

### Other Income

Anniversary campaign support	1,580,820
Investment gains	102,349
	1,683,169

<b>Total Increase in Net Assets</b>	<b>1,696,704</b>
-------------------------------------	------------------



## Endowment Funds

Endowment funds are long-term investments in the future of Narragansett Bay. They support critical strategic initiatives, reduce dependency on annual giving and help us keep pace with rising costs. In our 2020 Strategic Plan, our Board identified growing our endowment as an important priority to lead Save The Bay into its second half century. Our endowment funds are as follows:

### Board-Designated Endowment for Operating Support

Designated by the Save The Bay Board of Directors, this endowment provides general operating support and the greatest flexibility in managing organizational resources in response to changing circumstances.

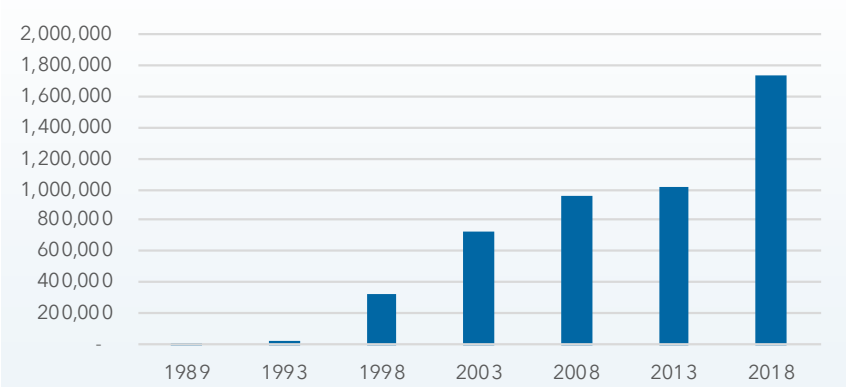
### Donor-Designated Endowment for Operating Support

Gifts to this endowment provide annual operating support to our advocacy, restoration and education efforts.

### Donor-Designated Endowments

The **Alison Walsh Fund** supports a yearly community award for outstanding environmental advocacy. The **Roosa Family Fund for Marine Education** supports marine environmental education for schoolchildren. The **John H. Chafee Memorial Fund** honors the Senator’s lifelong commitment to the environment and supports Save The Bay’s education programs. It can be used to designate endowment contributions below the threshold for individual endowments. The **Julia Sands Chase Fund** honors the memory of Mrs. Chase and supports Save The Bay’s critical mission.

Endowment Fund Growth





# Seagrass Society

Remembering Save The Bay in your will is one of the most meaningful gifts you can make. Within Narragansett Bay, seagrass beds are a primary source of food and shelter for an abundance of marine life. Just as seagrass beds are the foundation of a healthy Bay, the Seagrass Society ensures a long-term, healthy financial foundation for Save The Bay. We are grateful to our members who have included Save The Bay in their estate plans, ensuring the health of the Bay for generations to come.

## Seagrass Society

Anonymous	Lawrence Delhagen*	Ruth Mullen
Joan C. Abrams	Stan Dimock	Rita Munzer*
Hugh D. Auchincloss*	Adrian B. Diorio	Alan D. Nathan
Joseph S. Beck*	Maureen Fogarty	Elsie Ridge*
Frances Bodell	Laura Freid	Jane Ridgway*
Ellen Borden	Gail A. Ginnetty	Marion Sachs
Marjorie Briody	Clifford & Coleen Griffith	Sanford J. Sachs*
Tim P. Burns	John Kellam*	Curt & Patrice Spalding
Arthur A. Carter, Jr.	Linda L. Kelly	Robin Squibb
Elizabeth Carter	Sanne Kure-Jensen	Jonathan F. Stone
Robert A. Chase	Christy Law Blanchard	Jean T. Timmons*
Raymond Dearden*	Rob & Peggy Leeson	

*\*Deceased*



For more information about  
planned giving, contact Maureen  
Fogarty at 401-272-3540 x109 or  
visit [savebay.org/planned-giving](http://savebay.org/planned-giving)



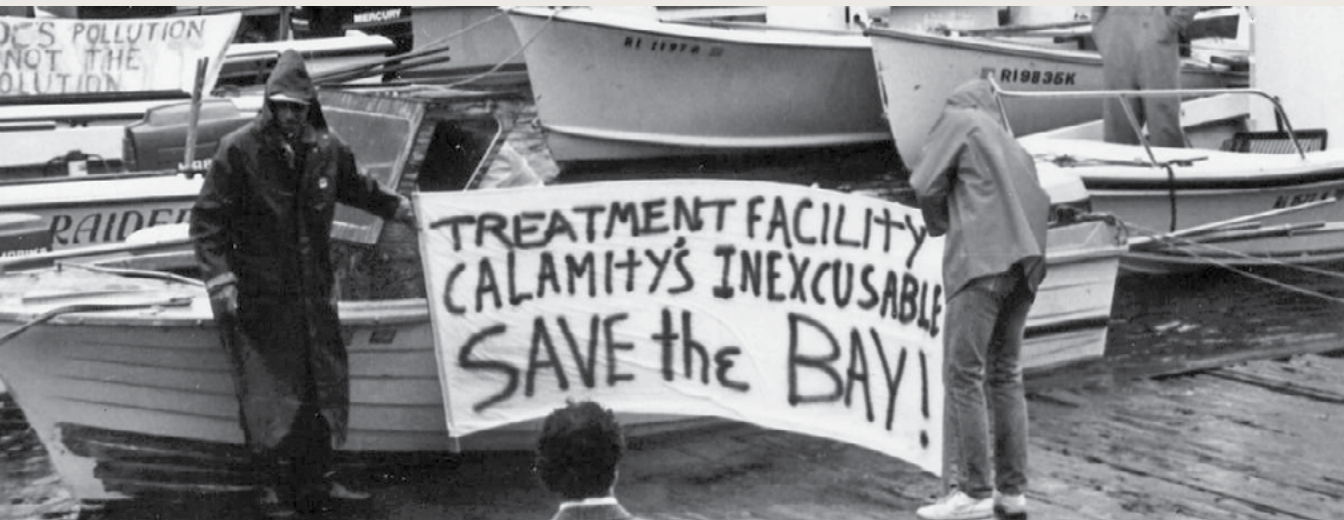
# Our 50th Anniversary Campaign

## *Be a Champion for Narragansett Bay*

---

For nearly five decades, Save The Bay and supporters like you have led the fight against a series of evolving environmental challenges, each requiring different strategies and resources.

As we approach our 50th anniversary, we recognize that many of the challenges of the past—from ill-conceived and damaging industrial projects to toxic industrial waste, raw sewage and poor government oversight—pale in comparison to the threats of today, and the challenges of the future.







### Today's Challenges

Three forces threaten to roll back decades of progress:

**Climate  
Change**

Drowning salt marshes, rising water temperatures, flooding and erosion

**Population  
Pressures**

Suburban sprawl, coastal development, and other human impacts

**Constrained  
Government**

Lack of resources and political will

Save The Bay must strengthen our capacity, flexibility and financial foundation to defend the Bay against these threats and sustain our strategic commitment to future generations.



# Our 50th Anniversary Campaign

## Preparing for the Future

To ensure continued progress, Save The Bay’s 50th Anniversary Campaign will consist of funds, each critical to our future efforts and success:

<b>Capacity Investments</b>  Invest in communications, education, development, and human resources <i>\$2 million</i>	<b>Sustainability</b>  Increase endowment and eliminate mortgage debt <i>\$3.4 million</i>	<b>Bay Defense</b>  Create a rapid response fund for unanticipated environmental threats <i>\$2 million</i>	<b>Public Access</b>  Complete a brand-new public dock, expanding visitor capacity <i>\$0.6 million</i>
--	---	--	--

The Bay Champions who make a pledge to our 50th Anniversary Campaign will play a critical role in equipping Save The Bay to:

- Promote environmental progress.
- Prevent the undoing of decades of achievement.
- Defend against new threats.
- Inspire each generation to care for the Bay.

*Interested in becoming a Bay Champion?  
Contact Joan Abrams at [jabrams@savebay.org](mailto:jabrams@savebay.org) or 401-272-3540 x126.*

## Bay Champions

*Thank you to the following Bay Champions who have made an early gift or pledge to Save The Bay's 50th Anniversary Campaign:*

Anonymous (2)	Bud and Maureen Cummings	Margaret Goddard Leeson and Robert Leeson, Jr.	Lucille Rossignol and Paul LaViolette
Joan and Richard Abrams	Stan Dimock	The Alletta Morris McBean Charitable Trust	Ed and Cindy Sabato
John J. Alves, Jr. and Anne B. Miller	Anne G. Earle	Eugene and Bronwyn McDermott	Anne F. Sage and Jesse D. Sgro
Bazarsky Family Foundation	The Norman and Rosalie Fain Family Foundation	Kate McPherson	George M. and Barbara H. Sage Fund
Kendra Beaver	Fish Family Foundation	F. Paul Mooney, Jr.	Sharpe Family Foundation
Jeff and Abby Boal	Wenley Ferguson and John Wolf	Ruth K. Mullen (in Memory of Jim Mullen)	George W. Shuster, Jr. and Stephanie L. Van Patten
Laurie and Ruud Bosman	Maureen Fogarty	Leslie Munson	Joseph and Rosalyn Sinclair Foundation
Robin Boss	Jane Garnett and David Booth	Alan and Virginia Nathan	Rosalyn Sinclair
Mike and Laura Bottaro	Stephen and Deborah Geremia	Dr. Andrew and Cheryl Nathanson	Bennett and Lissa Singer
Cynthia J. Butler	Michael Gewirz and Cleo Smart Gewirz	Navigant Credit Union	Samuel Slade and Susan Coughlin
Matthew Carlson	Gail A. Ginnetty	Lynne and Tim Palmer	Meg and Don Steiner
Rob and Jackie Carlson	Gruben Charitable Foundation	Aidan and Kate Petrie	Jonathan F. Stone
Kaitlyn Cedergren	Jenn Harris	Peter and Sheri Phillips	Jed Thorp and Sarah Harrigan
The Champlin Foundation	The Hassenfeld Family Foundation	Warren and Deborah Prell	US Fish and Wildlife Service
Barbara and Duncan Chapman	The Hazard Family Foundation	Prince Charitable Trusts	van Beuren Charitable Foundation
Joshua and Kristen Cherwinski	Emma Clyde Hodge Memorial Fund	The Prospect Hill Foundation	Alisson Walsh and Adam Braver
Citrin Cooperman & Company, LLP	Island Foundation	REI	Deborah E. Wiley
George L. Coleman	Michael Jarbeau	Rhode Island College	Wendy Woodward
Gib and Diane Conover	John Kaplin	Craig Richardson and Sarah Beinecke Richardson	John Zitzmann and Christine O'Brien
James M. Cox Foundation	Kate and Howard Kilguss		
Mr. and Mrs. Glenn M. Creamer	Chris and Sarah Lee		
Barbara Van Sciver Crouchley			



# Donor Support

## To our donors:

Save The Bay is deeply grateful to the thousands of individuals, businesses, foundations and other organizations that generously support our work to protect and improve Narragansett Bay. In this report, we are pleased to recognize all those who gave \$250 or more during calendar year 2018.

*If you have been omitted or incorrectly listed, please accept our sincerest apologies and notify Jackie Carlson at 401-272-3540 x106.*

Thank you.

Individual  
Giving  
Societies

**Ninigret Society**  
**\$75,000 and up**  
Ms. Elizabeth Prince

**Prudence Society**  
**\$50,000 - \$74,999**  
Anonymous  
Lynne and Tim Palmer  
Mr. and Mrs. Paul Salem  
Rosalyn Sinclair

**Sakonnet Society**  
**\$25,000 - \$49,999**  
Anonymous  
Mr. and Mrs. Glenn M. Creamer  
Deborah E. Wiley

**Salt Pond Society**  
**\$10,000 - \$24,999**

Michael J. Blitzer  
Jeff and Abby Boal  
Laurie and Ruud Bosman  
Peter and Lucia Gill Case  
Gib and Diane Conover  
Bud and Maureen Cummings  
Anne G. Earle  
Jane Garnett and David Booth  
Gail A. Ginnetty  
Mr. and Mrs. Alan G. Hassenfeld  
Emma Clyde Hodge Memorial Fund  
Kate and Howard Kilguss  
Craig Richardson and Sarah Beinecke Richardson  
Lucille Rossignol and Paul LaViolette  
Eric and Peggy Smith  
Meg and Don Steiner

**Brenton Reef Society**  
**\$5,000 - \$9,999**

Anonymous (2)  
Joan and Richard Abrams  
Mr. George T. Boyer  
Mr. and Mrs. Jack Brewer  
Barbara and Duncan Chapman  
Ms. Wendy H. Crandall and Mr. Chris A. D'Aguanno  
Denise M. Dangremond  
Stan Dimock  
Ms. Clover M. Drinkwater  
Jonathan and Ruth Fain  
Mark J. Formica and Linda A. Brunini-Formica  
Mr. Jonathan K. Gewirz  
Almon and Suzanne Hall  
Mr. and Mrs. William L. Leatherman

Chris and Sarah Lee  
Charles and Lory McCoy  
Ms. Devin McShane  
Ruth Mullen  
Virginia and Alan Nathan  
Jeff and Mary Jane Rasmussen  
Mr. Douglas Ricci  
George W. Shuster, Jr. and Stephanie L. Van Patten  
Dennis and Fran Slutsky  
Cary St. Onge  
Jonathan F. Stone

**Sachuest Society**  
**\$2,500 - \$4,999**  
Anonymous  
Noreen and Richard Ackerman  
George L. Coleman  
Judy and Kim Davis  
Mr. and Mrs. Eric D. Falk  
Mrs. Alexis Hafken



Margaret Goddard  
Leeson and Robert  
Leeson, Jr.  
Mr. and Mrs.  
Raymond T.  
Mancini  
Lynn and Robert  
Manning  
Ms. Holly McAllister  
Mr. John S. Struck  
and Mrs. Beatriz  
Struck  
Rod and Natalie  
Wright  
Mary and Tot Wright

**Beacon Society**  
**\$1,000 - \$2,499**

Anonymous  
Dr. and Mrs. Gregory  
J. Austin  
Mayer and Will Baker  
Mr. and Mrs. Hugh  
Balloch  
Mr. Joseph Barry

Lisa Barsumian and  
Tom Farrell  
Victor and Gussie  
Baxt Fund  
Mr. William M. Bazy  
Cynthia Bertozzi  
Jacob Brown  
Mr. and Mrs. Richard  
I. Burnham  
Tim and Lorrie Burns  
Ms. Cynthia J. Butler  
William and Christine  
Carr  
Johnnie Chace  
Mr. Nathan W. Chace  
and Mrs. Mary E.  
Chace  
Wayne and Jeannie  
Charness  
Ms. Suzanne  
Choquette  
Mr. Stephen H. Clark  
and Mrs. Kim N.  
Clark

Mr. and Mrs. Brent L.  
Cogswell  
Mr. and Mrs. John P.  
Collins  
Carter M. Conway  
Barbara Van Sciver  
Crouchley  
Mr. William  
DeAngelus III  
Michelle Denault and  
Mark Palmer  
Mr. and Mrs. Joseph  
DiBattista  
Brad and Kim Dimeo  
Sandy and Tom  
Dimeo  
Joseph Dowling  
Ms. Louise Durfee  
Ms. Patricia Fairchild  
and Mr. John  
Sessions  
Mr. William Falk\*  
Mr. and Mrs. Robert  
R. Faulkner  
Michael Ferranti

Tom and Suzanne  
Ferrio  
Lawrence K. Fish  
Mr. Richard Fogarty  
Mr. David B. Ford  
Mr. and Mrs. Stephen  
Geremia  
Pamela Giannini  
Robert H. I. Goddard  
and Hope Drury  
Goddard Fund at  
the Rhode Island  
Foundation  
Bill and Maureen  
Goldfarb  
Mr. and Mrs. Clifford  
F. Griffith  
Griffith Family Fund  
Elizabeth and  
Nicholas  
Grumbach  
Jenn H. Harris  
Donna and Charles  
Hazard  
Peter and Elaine Hess

*\*Deceased*

# Thank you

## 2018 Save The Bay Swim Fundraisers: \$1,000+

Thomas Allan	Courtney
Rachel Balaban	McCracken
Judy Beckman	Christopher
Marc Braunstein	Monoson
Rachel Busch	Denise Murphy
Peter Carson	Brian Nathan
Patrick Daniels	Deb Nelson
Patrick DeLeon	Jim Parham
Jim Dorsey	James Porter
James Farrar	Terry Ranney
Larry Fish	Dana Reed
Deborah Foppert	Matt Schulde
Daniel Force	Colleen Simpson
Mark Formica	Clare Sipprelle
Joyce Gagnon	David Splaine
Kathleen Gorman	David Stephenson
Jana Hesser	Jonathan Stone
Thor Johnson	Louisa Swain
David Karoff	William Van
Charlotte Kresse	Nostrand
Greta Markey	Scott Wakeman
Sheila Martin	Rob Wolfgang

Drs. Jennifer Hosmer and Brad Miller	Camilla W. Lee
Imperial 718 Fund at the Rhode Island Foundation	Charles P. Lee
Mr. Leonard Johnson	James and Diane Lynch
The Edward W. Kane and Martha J. Wallace Family Foundation	Mr. Stephen J. MacQuarrie and Ms. Kathryn P. Martin
Mr. John Kaplin	Scott and Laura Malkin
Dr. Audrey Kupchan and Sam Havens	Frederick R. Mattis
Laird Norton Family Fund	Eugene and Bronwyn McDermott

Memorial Fund at the Rhode Island Foundation

Maria and Charlie Milot

Susan and Thadeus Mocarski

Betsy and Clarke Moody

F. Paul Mooney, Jr.

Mr. and Mrs. Terrence P. Moran

Mr. Raymond F. Murphy, Jr.

Petra Napolitano

Jeff and Jessica Nathan

Dr. Andrew and Cheryl Nathanson

Mr. Edward Nelson

Mr. and Mrs. Robert H. Pease, Jr.

James and Abby Perry

Warren and Deborah Prell

Rebecca Preston

Mr. and Mrs. Norton H. Reamer

Ms. Kathleen M. Redgate and Ms. Sheila A. Finnegan

Julia and Curt Richardson

Barbara and Allen P. Rubine

Ed and Cindy Sabato

Nancy Safer

George M. and Barbara H. Sage Fund at the Rhode Island Foundation

Mr. and Mrs. Michael E. Schwartz

Peggy and Henry Sharpe Fund at the Rhode Island Foundation

Theresa Shireman

Susan and Dwight Sipprelle

Samuel Slade and Susan Coughlin

Jennifer Smith

David and Heidi Sommers

Mary C. Speare

David Staples

Wally and Jo Strobel

Ms. Mildred H. Struck

Mr. and Mrs. Shivan S. Subramaniam

Dr. Elizabeth M. Sutton

Anne and Michael Szostak

Dr. and Mrs. Philip A. Torgan

Alison and Charles Townsend

Mr. Andrew Wallerstein and Ms. Mary C. Sloane

Mr. Kenneth W. Washburn

Mr. Philip Weinstein, Esq.

Mr. Troy West

Mr. and Mrs. Bernard M. Wharton

Mr. and Mrs. Edward J. Wing

Mr. and Mrs. Harrison M. Wright

John Zitzmann and Christine O'Brien

**Hope Society**  
**\$500 - \$999**

Anonymous (6)

Mr. and Mrs. Robert S. Andreozzi

John J. Alves, Jr. and Anne B. Miller

Lisa and Dean Audet



Charles and Sia  
Bauer  
Ms. Kendra Beaver  
and Mr. David  
Hanrahan  
Donald Bisenius  
Mr. Jeffrey R. Blease  
Ms. April Bodman  
Marguerite and  
Walter Bopp  
Mr. and Mrs. Blair  
Boyer  
Samuel Bradner  
Alexandra  
Bragnolo  
Mr. Alan D. Brier  
Ms. Joan M. Cahill  
Mr. and Mrs.  
Sherburne W.  
Cameron  
Chris Cannon and  
Carol Hopkins  
April Carleton and  
Michael Rossi

Brandon Christensen  
Dr. Marshall W.  
Carpenter and Ms.  
Mary K. Grzebien  
Arthur H. Carr Fund  
Mr. Ross E. Cheit  
and Ms. Kathleen  
Odean  
Bob and Judy  
Chusmir  
Donald and Nancy  
Cloud  
Dr. and Mrs. Thomas  
J. Coghlin  
Oliver Cope and  
Hillary Johnson  
The Csanadi Family  
Anthony DaCosta  
Ray and Sarah  
D'Aguanno  
Tom and Leanne  
Danielsen  
Mr. and Mrs. Glenn  
Darden  
Elizabeth Delude-Dix

Diane and Larry  
DeMichele  
Mrs. Dorothy Denault  
Justin and Kirstin  
DeShaw  
Dinusha and John  
Dietrich  
John C. Eaton  
Memorial Fund  
Dr. and Mrs. Lee E.  
Edstrom  
Mr. and Mrs. John M.  
Falvey  
Mr. George Fazio  
Dr. Lloyd R. Feit and  
Dr. Linda Nici  
Mr. Bruce C.  
Ferguson  
Mr. Hugh Ferguson  
Wenley Ferguson and  
John Wolf  
Mr. and Mrs. Peter E.  
Flood  
Maureen and Eugene  
Fogarty

Sara Foster  
Brian P. Franco  
Allison M. Gauthier  
Mr. and Mrs. Steven  
B. Gewirz  
David and Mary  
Gillespie  
Dr. and Mrs.  
Frederick A.  
Godley III  
Mr. Marc Greichen  
John and Karleen  
Halliwell  
Dr. Steven P.  
Hamburg and Ms.  
Sarah A. Barker  
Mr. Peter J. Hendricks  
Ms. Catherine Hibbitt  
Dr. Christopher S. Hill  
Terence J. Karaniuk  
Mr. Leslie M. Kenney  
Eileen Kim  
Kissel Family  
Foundation



# Thank you

Bob Klugman  
Mr. Christopher F.  
Koller and Ms.  
Colette C. Cook  
Mr. Kristofer Kolstad  
Robert J. Kresse  
Mr. Justin Kreter  
Mr. John LaRiviere  
James Lastoskie  
Mr. Philip Carpenter  
Lee  
Brooke and Eugene  
Lee  
Mr. and Mrs. Edward  
Levine  
Mr. and Mrs. Roderick  
H. Lichtenfels  
David P. Lichtenstein  
The Limbird Family  
Stanley & Martha  
Livingston Fund at  
the Rhode Island  
Foundation  
Mr. and Mrs. Matthew  
Marsh

Caroline and Spencer  
Martin Fund of the  
New Hampshire  
Charitable  
Foundation  
Emilia McNutt  
Mr. Christian Miles  
Benjamin and  
Jeannie Miller  
Dr. Patrice Milos-  
Spalding and Mr.  
Curt Spalding  
Ms. Elizabeth H.  
Minifie  
Ms. Meredith A.  
Moody  
Joseph and Patricia  
Mundy  
Mr. Douglas  
Newhouse and Dr.  
Holly Bannister  
Paul and Donna  
Nicholson  
Mr. and Mrs. Jack  
O'Donnell  
Kevin and Amy Orth  
Mr. William H. Perkins  
Rebecca Perry

Peter and Sheri  
Phillips  
David Pollack  
David Reville and  
Tina Tryforos  
Mr. Donald K. Richer  
and Mrs. Karen J.  
Richer  
Dr. Michael Robbins  
Mr. Michael Robey  
Randy Rockney  
Mr. and Mrs. Thomas  
E. Rogers  
Mr. and Mrs. Stuart C.  
Ross  
Susan Ruf  
Thomas Ryan  
Mr. Peter B. Scoliard  
and Ms. Sarah E.  
Sinclair  
Mr. Colgate Searle  
and Mrs. Lalla  
Searle  
Mr. David Sharp  
Mr. Irving C. Sheldon,  
Jr. and Mrs.  
Katherine M.  
Sheldon  
Bennett Singer and  
Lissa Singer  
Tracy Sipprelle  
Austin Smith  
The Soutter Family  
Fund at the Rhode  
Island Foundation  
Rebecca Stockdill  
Mr. and Mrs. William  
Taft IV  
Mr. and Mrs. Asheton  
C. Toland  
Robin and Perry  
Traquina  
Natalie and James S.  
Venetos  
Mr. James Verinis  
Mr. Robert Vierra

Mr. and Mrs. Robert  
Vincent  
Mr. Scott H. Wakeman  
Salten Weingrod  
Family Fund at  
the Rhode Island  
Foundation  
Honorable Sheldon  
Whitehouse  
and Dr. Sandra  
Whitehouse  
Mrs. Dudley A.  
Williams  
Jean Wood  
Mr. Karl Ziegler

## **Salt Marsh Society \$250 - \$500**

Anonymous (5)  
Carleigh Abromovitz  
Mr. Matthew Ackroyd  
Ms. Lynne R. Agar  
Mr. George E.  
Alexandre, Jr.  
Mr. and Mrs. Jeffrey  
M. Allen  
Michael and Kirstin  
Allio  
Anne Archibald  
Mr. Berndt W.  
Anderson  
Mr. and Mrs. David C.  
Anderson  
Dr. Lucy Arnold  
Ms. Emily Arts  
Mr. Henri Arts  
Mr. Zach Arts  
Sarah Atkins  
Avalon Fund at the  
Rhode Island  
Foundation  
Jessica Bailey  
Drs. W. Lloyd  
Barnard, Jr. and  
Lucinda B. Barnard

*"It's so important to  
protect and restore  
our shorelines,  
beaches and the Bay.  
Participating in the  
Swim is a perfect and  
seamless way for me to  
get involved."*

- Elizabeth Beisel,  
Save The Bay Swim, 2018

Dr. Daniel I. Becker  
and Ms. Samantha  
Coit Becker  
Maddy Beckwith  
Ms. Nancy W. Bennett  
Dory and Dan  
Benson  
Ms. Barbara J. Bird  
Ms. Jean E. Black  
Mr. Matthew S. Blank  
Andrew Blazar  
Mr. Danny Bliss  
Mr. Gary Bolla and  
Mrs. Dawn Bolla  
Mr. and Mrs. Jesse M.  
Bontecou  
Robin Boss  
Dr. and Mrs. William  
Braden  
Sam J. Bradner  
Dr. and Mrs. Mark E.  
Braun  
Dr. Jeffrey M. Brody  
and Kate Brody  
Captain Nicholas  
Brown  
Paul Brown  
Mr. Thomas Bryson  
Christine Bush  
Rondi Butler  
Mr. Ron Caniglia  
Mary Caplin  
Ms. Patrice A. Carroll  
Mr. and Mrs. Bill R.  
Casey  
Linda Casey  
Peter and Patricia  
Cerilli  
Joshua and Kristen  
Cherwinski  
Lyn and Margaret D.  
Comfort  
Sara and Dan Connor  
Michael Connors



Mr. Allen H. Corcoran  
Christina Costa  
Ms. Claire Cournoyer  
Dr. Andrew Craig  
Mr. Thomas Craig  
Katherine Cunkelman  
Bill Cushman  
Mr. and Mrs. Lewis  
Dana  
Mr. Murray Danforth  
and Mrs. Judith  
Danforth  
Denise DaPonte  
Frank and Hope  
Darigan  
Jean L. DeLeon  
The Delmonico  
Family Fund at  
the Rhode Island  
Foundation  
Thomas and Alix  
Devine  
Mr. and Mrs. Michael  
C. Donilon  
Sherry and Arthur  
Douville

Mr. and Mrs. Robert  
M. Drew, Jr.  
Mr. Tom Driscoll  
Mr. Robert K. Duby  
Mr. and Mrs. Charles  
Dunn  
Linda M. Dunn  
Mr. Kaan Duru  
James Dworkin  
Susan Dye  
Melanie and David  
Dyer  
Mr. Kenneth Easley  
Kimberly Eckert  
Mr. and Mrs. Richard  
Edie  
Mr. and Mrs. Charles  
Eil  
Joseph Eilertsen and  
Sandra Krupp  
Emily Engle  
Ms. Ann M. Falsey  
Ms. Maia Farish  
Mr. William T. Farrell  
Mr. Edward T. Fish  
Mrs. Sarah Fogarty

Mrs. Helena  
Buonanno G.  
Foulkes and Mr.  
William Foulkes  
Marc Frechette  
Mr. and Mrs. Greg A.  
Fronczek  
Ms. Sarah Frost  
Louis and Mary Fuchs  
Tom Fulton  
Joyce Gagnon  
Rob Gallagher  
Ms. Mary O'Brien E.  
Garrett  
Mr. James F. Gendron  
Dr. David Gifford  
Dr. Stephen E. Glinick  
and Dr. Elizabeth  
A. Welch  
Mr. Michael Glover  
Mr. Robert Godfrey,  
Jr.  
Mr. and Mrs. Art Gold  
Amy L. Goldfarb  
Mr. and Mrs. Andrew  
Goodale



# Thank you

Mr. Raymond Gorman	Mr. Dean Jennings	Deborah Lyon and Apolonia Panagopoulos	Mrs. Donna Neuendorf
Mr. Richard F. Graefe and Mrs. Susan W. Graefe	Ms. Mary M. Jennings	Mr. Steve MacAusland	Mr. and Mrs. William S. Nicholson, Jr.
W. Cabell Grayson	Mr. and Mrs. Keith N. Johnson	Tracy L. Maeter	Melanie Niemiec
Dr. and Mrs. Joseph J. Greco	Gregory Jones and Patricia Richmond-Jones	Suzanne and Ira Magaziner	Mr. Dennis W. Nixon
Mr. Dan Gregory and Mrs. Mary M. Gregory	Mr. and Mrs. Lawrence I. Kahn	Solvejg T. Makaretz	Carrie O'Brien
Mr. Jack Guarnaccia	Eric Kawaoka	Alexandria Maloy	Paul and Denise O'Brien
Mr. and Mrs. David J. Gumbley	Ms. Mary Lou Kennedy	Mr. Kenneth J. Mancini	Dorothea B. O'Byrne
Susan Guralnik	Cheryl A. King and Bernard Zimmermann	Mr. and Mrs. Douglas G. Mancosh	Jennifer H. O'Connell
Keri Hague	Dr. and Mrs. Paul F. Kirk	Dr. and Mrs. A. Louis Mariorenzi	Andrea Doyle O'Connor
Hampson Charitable Fund	Ms. Andra Kirsteins	Carolyn Mark and Bill Stone	Mr. William Paul O'Neill
Mr. and Mrs. Donald B. Hampton	Mr. James Knowles	Mr. George Marr	Joe and Molly Orchardo
Mr. Randy Hannold	Brian Knox	Kristin Martin	Mr. and Mrs. Thomas P. Palmer
Rachael Hantman	Mr. Steven Kohm	Mrs. Theresa E. Mathiesen	Jonathan and Bettie Pardee
Janie H. Harris	Andrew Kresse	Anthony McAuliffe	Mr. John R. Pariseault
Mr. and Mrs. Edward T. Harvey, Jr.	Bradford Labine	Haley McCrystal	Ms. Jamie Pascale
Eric M. Hastings	Mr. and Mrs. Jeffrey A. Lanphear	Mr. Michael A. McGourty	Mr. Eric Patrick
Michael Hatch	Ms. Sally E. Lapides	Mr. Ian McHugh	Captain and Mrs. Bernard L. Patterson III
Ingo & Tracy Hentschel	Mr. Jonathan Lathrop	Mark McHugh	Ms. Deborah K. Penn
Julie Herrick	Mr. Jonathan Leary	Kate McPherson	Mary Beth Persons
Ms. Tara Higgins	Pamela Lenehan and Lawrence F. Geuss	Kelley McShane	Dana Pickard
Shaun Hogan	Andrew Levinson	Mr. Edgar Mercado	Harris Pitnof
Mr. Thomas Hogan	Ruth H. Liguori	Mrs. Carlene Messinger	Dr. and Mrs. Michael Poshkus
Mr. and Mrs. John N. Hooper, Sr.	Jane C. Lippincott	Jean Miller	Mr. and Mrs. Mitchell T. Pozez
Kim and Paul Hooper	Mr. and Mrs. Stephen B. Lister	Webb Moore	Bridget and David Prescott
P. Gardner Howe	Jeff LoGioco	Susan and Tony Morettini	Abby Preston
Amanda Howland	Dr. Andrew Lohmeier and Prof. Naoko Shibusawa	Ms. Terry H. Morgenthaler and Mr. Patrick J. Kerins	Mr. and Mrs. William C. Prichett
Mr. and Mrs. John H. Hubbard	Ms. Mary F. Lovejoy and Mr. John Whistler	Carol and Richard Moser	Dr. and Mrs. John J. Przygoda
Mr. Howard Huntoon, Jr.	The Ludwig-Leone Family	Ted Mundy	Dr. Jodi Pukl
Mr. and Mrs. John Isaac		Frederick Murphy	Mr. Mark B. Rafferty
David Jaye			Mrs. Rose Randall



Mr. and Mrs. Joel Raskin  
 Mr. John P. Reeder, Jr.  
 Mr. Stephen Resnick  
 Barbara and Dean Robinson  
 Miss Diane M. Robitaille  
 Ms. Thelma Rocha  
 Bill Roe  
 Chris F. Roemlein  
 Ms. Tanya M. Roy  
 Mr. John D. Ruscito  
 Douglas and Elizabeth Rynda  
 Anuj Sampat  
 Douglas Sayles

Mr. B. Clarkson Schoettle  
 Mr. and Mrs. Lewis C. Seifert  
 Mr. and Mrs. Bruce A. Shaw  
 Mr. and Mrs. William A. Shawcross, Jr.  
 Mr. Kevin Shea  
 Dr. Douglas Shemin  
 Oley Sheremeta  
 William B. Shipp  
 Mrs. Frances Shippee  
 Hardwick Simmons  
 Samuel Smart  
 Amy Smith  
 Ms. Susan Space

Henry Spencer and Nicky Cass  
 Mr. and Mrs. Richard Spies  
 Mr. John Stanley  
 David and Holly Stephenson  
 Mr. and Mrs. Douglas R. Stevenson  
 F. David and Barbara Stonestreet  
 Mr. David Stott  
 Ms. Ruth M. Strach  
 Mrs. Cornelia B. Sturgis  
 Andrew Sucov and Heather Chapman  
 Chris and Jen Suellentrop

Suglia Family Fund at the Rhode Island Foundation  
 Dr. Phyllis A. Syres  
 Christine Tananone  
 Mr. Carl Tauber  
 Joan and John Taylor  
 William S. Ten Eyck  
 Jennifer and Marc Theroux  
 Pamela and Christopher Thomas  
 Dr. and Mrs. John F. Thompson  
 Honorable O. Rogeriee Thompson  
 Ms. Susan E. Tietze

# Thank you

Mr. Bob Tomassone

Mr. and Mrs. John B.  
Torgan

Ms. Christine  
Townsend

Mr. and Mrs. Peter G.  
Trafton

Mr. and Mrs. Tim C.  
Tuff

Archbold D. van  
Beuren and Helene  
van Beuren

Amy Verreault

Alejandra Vida-  
Roman

John Vitha

Ms. Sharon B. Wallace

Alisson Walsh and  
Adam Braver

Mr. John Walsh III

Mr. Michael Walsh

Mr. Colin Walsh

Wendy and Tim  
Walters

Mrs. Leslie H.  
Weeden

John Welch

Mr. and Mrs. Arthur  
Wheelock

David W. White

Mr. Austin Whitman

Ms. CK Raynes Wilder

Mr. and Mrs. Rian M.  
Wilkinson

Mr. and Mrs. David  
Witbeck

Mr. Thomas F.  
Woodhouse

Mr. Edward E. Zuker

## Foundations, Government Grants & Gifts

### \$75,000+

EJMP Fund for  
Philanthropy

The Norman and  
Rosalie Fain Family  
Foundation

Gruben Charitable  
Foundation

Forrest C. and  
Frances H. Lattner  
Foundation

NOAA

Prince Charitable  
Trusts

The Prospect Hill  
Foundation

Rhode Island  
Foundation

State of Rhode Island

The Salem  
Foundation

van Beuren  
Charitable  
Foundation, Inc.

### \$50,000 - \$74,999

Joseph and Rosalyn  
Sinclair Foundation

U.S. Environmental  
Protection Agency,  
Region 1

### \$25,000 - \$49,999

John and Daria Barry  
Foundation

Citizens Community  
Foundation

Island Foundation

### \$10,000 - \$24,999

11th Hour Racing

Cruise Industry  
Charitable  
Foundation

The Max &  
Victoria Dreyfus  
Foundation, Inc.

The Hassenfeld  
Foundation

The Hazard Family  
Foundation

Emma Clyde Hodge  
Memorial Fund

Horne Family  
Foundation

June Rockwell Levy  
Foundation

The Aletta Morris  
McBean Charitable  
Trust

National Wildlife  
Federation

The Providence  
Journal Charitable  
Legacy Fund

Sharpe Family  
Foundation

The Timken Matthews  
Family Foundation

Verizon Foundation

The Whitehead  
Foundation

### \$5,000 - \$9,999

Billy Andrade- Brad  
Faxon Charities For  
Children

The Dorr Foundation

Roy A. Hunt  
Foundation

MacLean Vaz Marine  
Education Fund

Meehan Foundation

Newport Fed  
Charitable  
Foundation

The John Ben Snow  
Memorial Trust

Herbert E. and Daisy  
A. Stride Memorial  
Foundation

Textron Charitable  
Trust

### \$2,500 - \$4,999

American Chemistry  
Council

Bonnell Cove  
Foundation

Coastline Trust Co.  
- Mary Dexter  
Chafee Fund

John Clarke Trust

Dime Bank  
Foundation, Inc.

The Doff Foundation

Grimshaw-Gudewicz  
Charitable  
Foundation

Ocean State Charities  
Trust

Restore America's  
Estuaries

Silver Tie Fund

US Fish and Wildlife  
Service

VWR Foundation

### \$1,000 - \$2,499

Ida Ballou Littlefield  
Memorial Trust

C.R. Bard Foundation

Cardinal Health  
Foundation

Ira S. and Anna  
Galkin Charitable  
Trust

Haffenreffer Family  
Fund

The Alexis Berman  
Hafken Family  
Foundation



Kissel Family Foundation  
 Providence Rotary Charities Foundation  
 Ramlose Foundation  
 The Daniel Rosenblatt Foundation  
 The Sand Family Fund  
 Edwin S. Soforenko Foundation  
 West Bay View Foundation

**\$500 - \$999**

The Naomi and Walter Chucnin Foundation  
 The Severus Foundation

**Businesses & Organizations**

**\$25,000 - \$49,999**

CVS Caremark  
 Charity Classic, Inc.

**\$10,000 - \$24,999**

Citizens Bank  
 National Grid  
 Schneider Electric  
 Waterkeeper Alliance

**\$5,000 - \$9,999**

BankNewport  
 Blue Cross & Blue Shield of Rhode Island  
 Citrin Cooperman & Company, LLP  
 Corvias Solutions  
 CVS Health

Patagonia  
 Taunton River Stewardship Council

**\$2,500 - \$4,999**

Amica Mutual Insurance Company  
 Ashaway Line and Twine Manufacturing  
 Avalon Trust  
 Botanical Center Conservancy at Roger Williams Park  
 Bottaro Law Firm LLC  
 Bradford Soap Works  
 Green River Silver Company  
 HTJB, Inc.  
 Macy's  
 Rexel Energy Solutions  
 Rhode Island College  
 Sharon Cameron Lawn Interiors  
 United Natural Foods, Inc.

**\$1,000 - \$2,499**

BayCoast Bank  
 Brown Medicine, Brown Physicians, Inc.  
 Coast to Coast Promotional Products  
 Denali  
 Falvey Insurance Group, Ltd.  
 F.L. Putnam Investment Management Company

*“Save The Bay has made such a big difference in everyone’s lives. You don’t even realize that the Bay doesn’t smell like it used to in the 70s, 60s or 50s.*

*In the future, I’d like to be able to swim in the Bay, closer to Providence, like my mother-in-law did when she was a child.*

*It would be great to see what was possible 100 years ago happen again today.”*

– Elinor C. Thompson,  
 Artist, Artists for The Bay Show and Sale, 2018

Greenleaf  
 Compassionate Care Center  
 Locke, Lorde, LLP  
 MetLife Auto & Home  
 Newport Harbor Corporation  
 Rhode Island Brewing Society  
 SCS Design  
 Starkweather & Shepley  
 Swarovski North America, LTD

**\$500 - \$999**  
 B & T Associates  
 Eastern Outdoor Reps Association  
 Farrar Associates  
 The Green Cross  
 Hilb Group New England  
 Maloney Properties  
 Mott & Chace Sotheby's International Realty  
 Narragansett Bay Commission  
 Regency Plaza



# Thank you

Strategic Retirement  
Partners  
Tiffany & Co.  
Tillotson Corporation  
The United Theatre  
Westerly Community  
Credit Union  
Ximedica  
**\$250 - \$499**  
AIPSO  
The Arden  
Corporation  
Aries Support  
Services  
Arrow Fuel  
AssetWorks LLC  
d'Olivera &  
Associates  
DonorSearch  
Dupuis Oil Company

Kaiser Tree  
Preservation  
Company  
Neptune Benson  
Novaya Ventures  
Palumbo Design  
Perform Better  
Regency Plaza  
Chestnut Hill  
Sullivan & Graber  
Taylor Box Company  
Two Brothers Quality  
Painting  
The United Theatre  
Walmart  
W. B. Hill, Inc.  
Weekapaug Yacht  
Club  
WF Engineering  
Associates

## Partners

Save The Bay  
acknowledges  
the following  
partners:

Amazon.com  
City of East  
Providence  
City of Newport  
Facebook  
The Nature  
Conservancy  
Newport Polo  
NOAA  
Restore America's  
Estuaries  
RI CRMC - Coastal  
Resources  
Management  
Council

RI Department of  
Environmental  
Management  
Town of Barrington  
Town of Charlestown  
Town of Tiverton  
Town of Westerly  
University of Rhode  
Island  
U.S. Fish and Wildlife  
Service  
Warren Land  
Conservation Trust,  
Inc.  
Weekapaug  
Foundation for  
Conservation  
Wild and Scenic  
Stewardship  
Council



## In-Kind Gifts

Our More Than 3,000 Volunteers

1661 Inn

4imprint

Academy Bus Lines

Alert Ambulance

Alessandra Dolnier  
Original Fine  
Jewelry

Au Bon Pain

Aunt Carrie's

Ayesha Studio  
Jewelry

B. Good

Battleship Cove

Bayberry Beer Hall

Belmont Market

Ben and Jerry's

Big Blue Bug  
Solutions

Billy's Restaurant

Blackstone Bicycle

Block Island Ferry

Bob Tomassone

Boris Bally

Bradford Soap Works

Brahmin

Bristol Oyster Bar

Button Hole

Capriccio

Castle Hill Inn &  
Resort

CCRI Massage  
Program

Celestial Cafe

The Chanler at Cliff  
Walk

Chelo's Hometown  
Bar & Grille

Chophouse Grille

Coast to Coast  
Promotional  
Products

Conanicut Marine

Crystal Spring Water  
Company

Dave & Buster's

Dave's Coffee

Dave's Marketplace

Del Sol

Del's Lemonade

Designs by Katrina

Devil's Purse Brewing

Dover Saddlery

Durk's Bar-B-Q

Earth Care Farm

Eastern Mountain  
Sports

Easy Entertaining

Edible Arrangements

Elinor Thompson

Elizabeth Lind

Eli's Kitchen

Fire Works Catering

Flipp Salon  
Apothecary

Foolproof Brewing  
Company

Forza Cavallo Gallery

Francesca Dolneier  
Photography

Freddie Bing  
Hot Dogs/BEI  
Enterprises

GG's Pretzels

Gina Marie Art Studio

Gooseneck Vineyards

Granny Squibb's Iced  
Tea

Grey Sails Brewing

Harley Bartlett

Hopey's Heart  
Foundation

Hotel Viking

Imports from  
Marrakesh

Iron Works Tavern

Island Outfitters

Jamestown Fire &  
Rescue - On the  
Water

jetBlue

Jody King

Johnny Rockets

Julian's

KEEL Vodka

Kelley's Deli

Kent Stetson

KNEAD Donuts

Kountry Kitchen

La Creperie

LaSalle Bakery

Laid Back Fitness

Lang's Bowlarama

L.L. Bean

lululemon athletica

LUXE Burger Bar

Matunuck Oyster Bar

McGrath Clambakes,  
Inc.

Mike Riccio Sports,  
LLC

*"We're proud to support Save The Bay and their efforts to keep our shorelines healthy."*

*Through the International Coastal Cleanup, our colleagues joined forces to make a big impact in our home state of Rhode Island by collecting hundreds of pounds of trash."*

– Eileen Howard  
Boone, SVP, Corporate  
Social Responsibility  
& Philanthropy, CVS  
Health





# Thank you

## Gifts In Memoriam

*The Save The Bay Endowment Fund was established in 1989 by Peter Lisle in memory of Elizabeth S. Lisle as a lasting tribute to the work of Save The Bay. In 2018, gifts were received in loving memory of:*

Edward Agin	Brad deWolf, Jr.	Thomas Hazlehurst	E. Louise Pryor
Ronald Baer	Pauline Dugas	Robert Karwoski	Trevor Ramella
Kim Benjamin	Joyce Fairchild	Ivars Kirsteins	Carlos Rodriguez
James Butler	Stanley Fairhurst	Jeffrey Knowles	Mark Rotondo
Constance Byrnes	David Flynn	John Liston	Sanford Tanner
Anthony Cardello	Larry Fredrickson	Dan Magnanimi	Warren L. Trafton, Jr.
Timothy Clark	Dave Frost	Merton William McAvoy, Jr.	Joannes Van Orsouw
Eli Cohen	Collette Gershkoff	Kevin McGourty	Bob Vick
Bobbi Croce	Will Gorton	Adeline Poulin	John D. Work
John Cullinan	Jean Haley		
Ming's Asian Street Food	Pastaio	Rhode Island Philharmonic Orchestra	Tapped Apple Winery
Mulligan's Island Golf & Entertainment	People's Power & Light	Rhode Island Red Food Tours	Tatutina
Narragansett Brewing Company	Peter de Savary	Rhode Island Shellfishermen's Association, Inc.	The Bodhi Spa
Narrow River Kayaks	Peter Sebring	Rhode Island Turnpike and Bridge Authority	The Green Door
NAVSTA Naval Station Newport	PF Trading	RI Department of Environmental Management	The Kayak Centre
New England Tent	PGH La Palmeraie Polo Club	Rock Spot Climbing	The Traveler Beer Company
Newport Businesses	Pranzi Catering	Saltzman Watches	Theatre by The Sea
Newport Grand Casino	Providence Coal Fired Pizza	Sarcastic Sweets	Tom Deininger
Newport Hospital - Beach Medical Services	Providence Performing Arts Center	Seastreak Martha's Vineyard	Tom's BaoBao
Newport Playhouse	Puesto Viejo Estancia & Polo Club	Shades	Trinity Repertory Company
Newport Storm Brewery	Ragged Island Brewing Co.	Shady Lane Foods	Tuscany - Mohegan Sun
Newport Vineyards & Winery	REI	Sons Of Liberty Spirits Co.	Two Girls Digging
NSC Restrooms	Renaissance Providence Downtown Hotel	Swarovski	TwoTen Oyster Bar & Grill
Okemo Mountain Resort	Rhode Island Brewing Society	Sydney Providence	U.S. Coast Guard Station Castle Hill
Onne van der Wal Photography			Wakefield Running Company
			Wanumetonomy Golf & Country Club
			Whalers Brewing Co.



Wilcox Tavern  
XO Cafe  
Yelp  
Yoleni's

### Matching Gifts

AIG  
Apple  
Amica Insurance  
American Express  
Amerigives, Inc.  
Ameriprise  
Bank of America  
Bank of New York  
Mellon  
Charities Aid  
Foundation of  
America  
Charles Schwab  
Foundation  
Citizens Bank

Columbia  
Threadneedle  
Investments  
CVS  
Dell  
Deutsche Bank  
Donate Well  
Fannie Mae  
Fidelity  
FirstData  
FM Global  
GE Foundation  
Genesee & Wyoming,  
Inc.  
Genentech  
The Thomas and  
William Gilbane  
Foundation  
Give with Liberty  
Goldman Sachs  
Google  
Grainger  
Guggenheim  
Partners  
Hasbro, Inc.

HP  
IBM  
Imtra Corporation  
Intel Foundation  
Investment  
Technology Group  
Jacobs Associates  
John Hancock  
Johnson & Johnson  
JPMorganChase  
Kaman Corporation  
KKR  
McKinsey &  
Company  
Microsoft  
Morgan Stanley  
National Grid  
Network for Good  
Optum  
Oracle  
PepsiCo Foundation  
Pew Charitable Trust  
Pitney Bowes  
Pfizer Foundation

Progressive Insurance  
Prudential  
Foundation  
Raytheon  
Rhode Island  
Foundation  
The Rockefeller  
Foundation  
Salesforce.com  
Schneider Electric  
State Street  
Symetra  
Teradata  
Texas Instruments  
Textron  
TripAdvisor  
Truist  
UBS  
United Health  
United Technologies  
Verizon  
Waters Corporation  
Wells Fargo  
Yelp  
YourCause



# Save The Bay Leadership & Staff

## Board of Directors

lends strategic vision and fiduciary governance.

### Board Officers

Cheryl Nathanson  
*President*

Gilbert Conover  
*Vice President*

Justin DeShaw  
*Vice President*

Gail Ginnetty  
*Vice President*

Eugene McDermott,  
Esq.  
*Secretary*

Steve Geremia  
*Treasurer*

### Board Members

Michael Blitzer

Robin Boss

George Coleman

Joseph "Bud"  
Cummings

Stephen Gerencser

Jenn Harris

Chris Lee

Lynn Manning

Anne Miller

Ruth Mullen

Alan Nathan

George Shuster

Samuel Slade

Robert Vierra

Alisson Walsh

### Committee Members

Alden Anderson

Joelle Bowen

Heidi Buonanno

Rhondi Butler

Wayne Charness

Steve Clark

Joe DiBattista

Chris DuPaul

Anne Earle

Tom Ferrio

Suzanne Ferrio

Richard Fogarty

Tom Goddard

Allen Hance

John Heinenman

Anne Holloway

Ryan Kelly

Chris Kincaid

Geoffrey Kirkman

Howard Kilguss

Scott Lisle

Lynn Malone

Neil Marcaccio

Rick Massie

Patricia Meleragno

Brooke Merriam

F. Paul Mooney

Tony Morettini

Dick Pastore

Linda Pearson

Deb Penn

Peter Phillips

Warren Prell

Deb Ramm

Nick Roach

Alisha Real

Tom Rogers

Stuart Ross

Tatiana Ryneerson

Richard Sherman

Stephanie Shuster

Ben Singer

Mark Tracy

Edward Wing

Alyssa Wood

Chip Young

John Zitzmann

## Board of Trustees

are trusted advisors with long-time commitment.

Joan Abrams

Trudy Cox

Kate Kilguss

Sarah Beinecke  
Richardson

Dr. Vincent Rose

H. Curtis Spalding

Ellicott Wright

## President's Leadership Council

lends expertise, perspective, contacts and resources.

Alden Anderson, Jr.

Ruud Bosman

Nick and Wendy  
Bowen

Timothy Burns

Duncan and Barbara  
Chapman

Steve Clark

Jemma Craig

Denise Dangremond

Elizabeth M. Delude-  
Dix

Joseph DiBattista

Bradford S. Dimeo

Patrick Driscoll

Anne G. Earle

Jonathan D. Fain

Mark J. Formica

Leslie Gardner

Thomas P. I. Goddard

Bob and Robin Hall

Peter Hallock

Steven Hamburg

Alan G. Hassenfeld

C. Michael Hazard

David and Susan  
Hibbitt

Mr. and Mrs. Richard  
Higginbotham

Jennifer Hosmer

Kate & Howard  
Kilguss

Brooke Lee

Raymond T. Mancini

Brad Miller

F. Paul Mooney

Raymond F. Murphy,  
Jr.

Tim Palmer

Aiden & Kate Petrie

Warren Prell

Elizabeth Prince

Jeffrey Rasmussen

Michael Rauh

Sarah Beinecke  
Richardson

Marty Roberts

Nancy Safer

Paul Salem



George Shuster and  
Stephanie Van  
Patten

Jeffrey Siegal  
Eric R. C. Smith  
Hon. O. Rogeriee  
Thompson  
Philip Torgan  
Geoff Tuff  
William Vareika  
Kenneth W.  
Washburn  
Ellicott Wright

Staff

**Executive Director**  
Jonathan Stone

**Staff**  
Joan Abrams  
Kendra Beaver  
Jess Bornstein  
Tammy Camillo  
Jackie Carlson  
Kaitlyn Cedergren  
Joshua Cherwinski

Gráinne Conley  
Leanne Danielsen  
Nicole Delos  
Stan Dimock  
Chris Dodge  
Kathryn Dorchie  
Katharine Estes  
Lauren Farnsworth  
Wenley Ferguson  
Maureen Fogarty  
Topher Hamblett  
Letty Hanson  
Stephany Hessler  
Mike Jarbeau

Jennifer Kelly  
Meghan Kelly  
Mary Klimasewiski  
Adam Kovarsky  
Judy Lewis  
Jeannine Louro  
Kate McPherson  
Leslie Munson  
Eric Pfirrmann  
Bridget Kubis  
Prescott  
David Prescott  
Cindy Sabato  
Jed Thorp



# Be a Champion for Narragansett Bay



OUR **50th** ANNIVERSARY CAMPAIGN

Support Save The Bay's efforts to prepare  
for the next 50 years and beyond.

[www.savebay.org/BeAChampion](http://www.savebay.org/BeAChampion)

